

ACTIVE LINE UNLIMITED



Active Line

**FUN UNLIMITED:
MULTIPLE FUNCTIONS ALL THE WAY.**





Active Line, BMW's new range of multi-function motorcycle wear. Sports fashion without the slightest limit to your sporting ambitions. Active Line is fun, freedom and adventure. And it's avantgarde in style, while designed to be casual, functional and durable. It's unconditionally right for the enthusiastic rider. For winter sports. Or even for the thrill of free-fall parachuting. Whenever you're out for some real action, Active Line specializes in sports unlimited.

ACTION UNLIMITED: VERSATILITY AT ITS BEST.

The Active Line multi-function suit delivers multi-talented wear for the sporting individualist. Perhaps you can think of it as a second skin for modern people. The versatile inside-out wear is just right in every situation thanks to its combination of two suits in one. The outside displays a casual sports suit made of light-weight pleasant-to-wear and stable blended cotton fabric which feels right even in hot weather. Secuflex protectors on the elbows, shoulders and knees are removable. Moreover, the Gore-Tex® jacket and trousers on the inside can be zippered directly onto the outer skin.

This allows you to combine the Active Line suit individually for virtually any purpose. Motorcycle or mountain bike touring. Parachuting or sailing. Hiking in crisp fall weather or climbing rugged mountains.

With winning combinations, Active Line shows off your sporting talents beautifully.





Pockets unlimited: The convenient outside pocket protects your sunglasses. Or your ticket for the ski-lift. Or you name it. The removable, watertight bag in the chest pocket is the perfect place for keeping money and documents safe and handy.



Three in one: The inside lining of the jacket and trousers can be removed quickly and easily. So that you can wear the inside or outside separately, or both of them together. Your particular sport and the weather will help you mix and match.



Open for sporting action: The entire suit can be zippered up and around to form an overall.



Like a second skin, the removable Gore-Tex® inner garments provide a watertight, extra-lightweight undersuit next to the durable, cotton outer-suit.

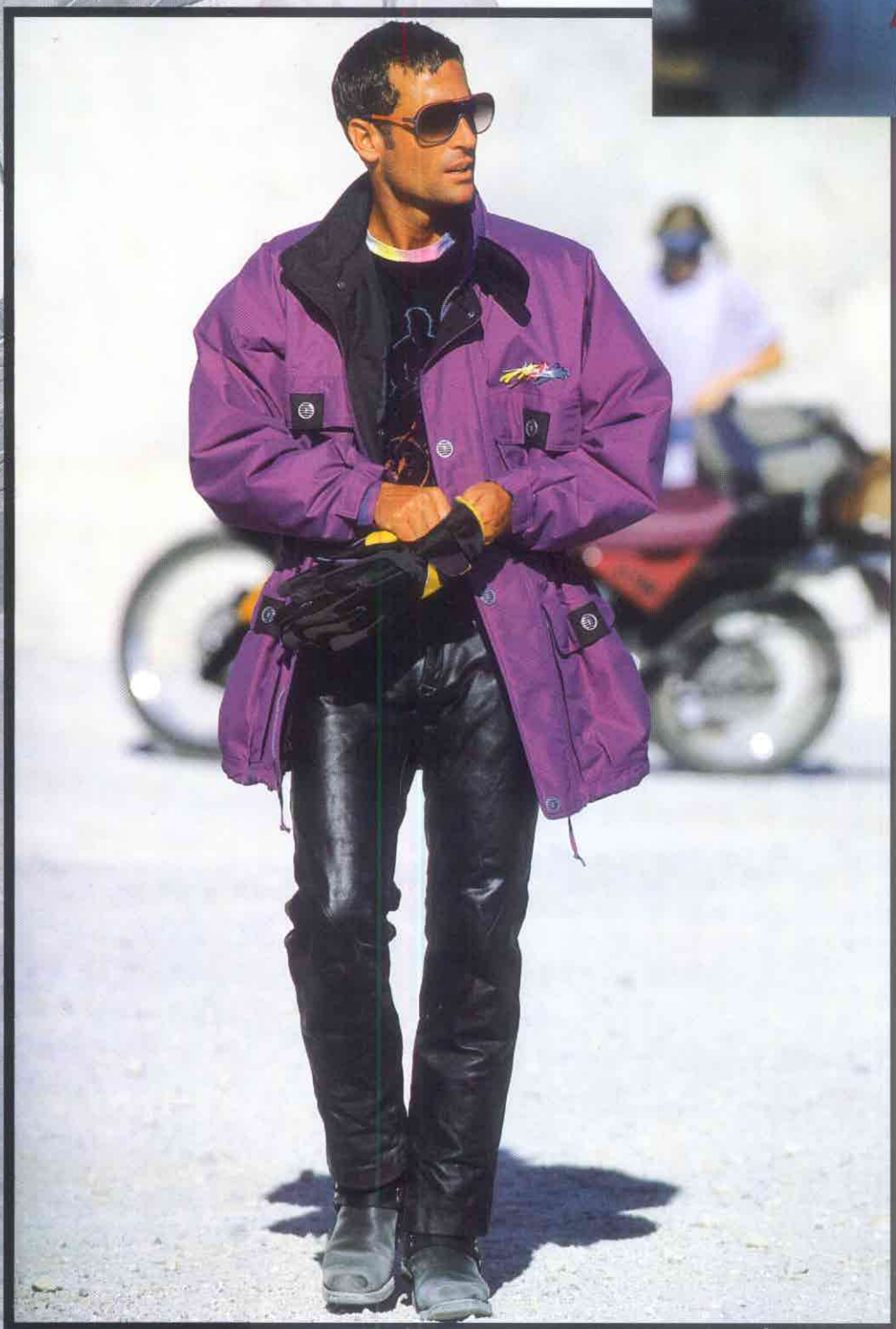
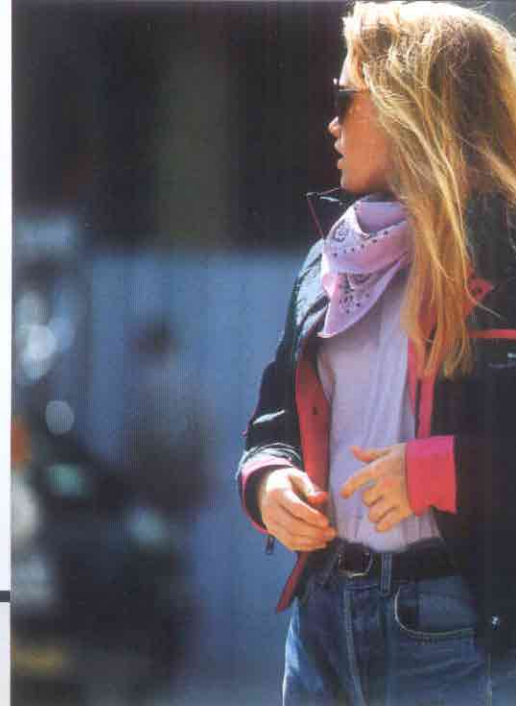


Singing in the rain, sleet, wind and other challenging weather: Sleeve and trouser cuffs snugly grip your body but still allow room for gloves and ski boots, etc. Intelligently placed zippers make the suit easy to put on and take off.





**ACTION UNLIMITED:
THAT EXTRA SOMETHING FOR
THE SPORTING INDIVIDUALIST.**



1
Active Line for individual combinations: The Active Line jacket is an ideal match for virtually all trousers. The Gore-Tex membrane keeps out wind and water while allowing your own skin to breathe. Removable Secuflex protectors on the elbows and padded shoulders protect you from injury. And the tasteful, sporting design adds the right touch of color to your life.



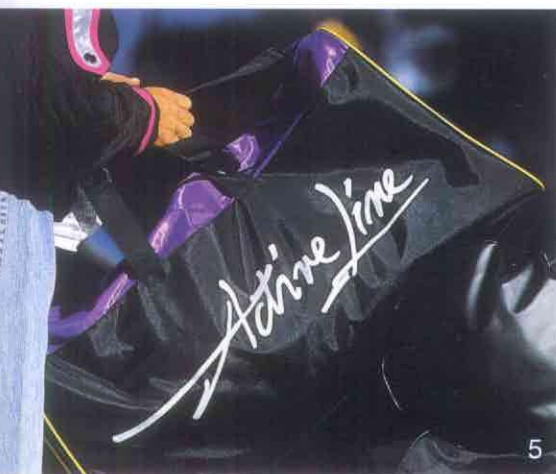
2



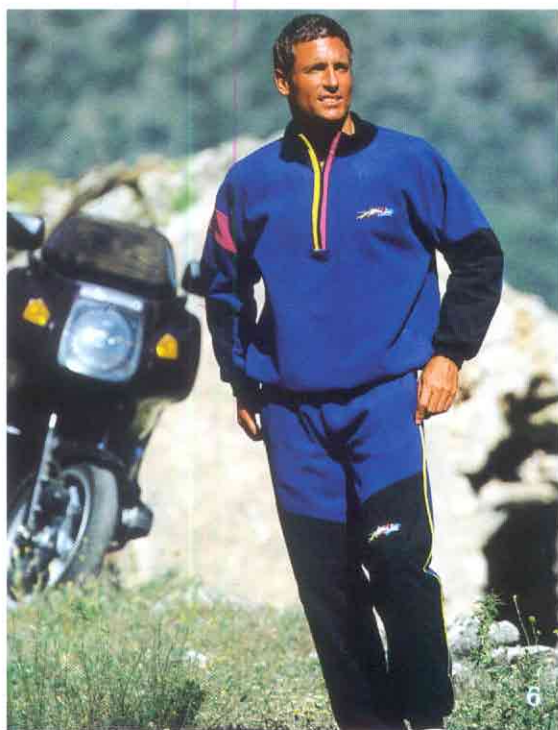
3



4



5



6



7



8

2 The exclusive look and feel of Active Line: Presenting the motorcycle and leisure-time jacket. It's a durable, lightweight jacket with flair, and boasts padded, kevlar-protected elbows and shoulders. The thermal padding protects you from wind and weather. Reflector stripes on the folding shoulder flaps contribute to visibility.

3 The inside story: Active Line underwear made of helanca and cotton keeps you warm inside and leaves the cold air outside. The two materials are interwoven; the high turtleneck collar fits flush around your neck. Tight but elastic body fit with an extra-long back.

4 With the Active Line baggage roll, you don't have to keep adventure waiting. Capacity is up to 2.1 cu. ft., with everything stowed away completely watertight. The material is tearproof nylon with high-frequency fused seams. Special straps for fastening on motorcycle baggage rack and carrying by hand.

5 Where to put your motorcycle wear? Simply put everything into this Active Line wear bag. The boots and motorcycle helmet have their own ample space in two separate sections, one of which is watertight. Your maps, ID papers, etc., can be placed in the convenient outside documents folder.

6 Express your inner character underneath with roughened polar fleece on both sides. A two-piece thermal combination with extremely attractive features. Modern underwear is just right, for example, for wearing beneath a BMW Gore-Tex® suit. Keeps you extremely warm and absorbs very little moisture.

7 Active Line also means outstanding accessories: A unique scarf for the active individualist with a positive outlook, 100 % cotton.

8 To give your hands the right kind of feeling: Light Gore-Tex® gloves by Active Line. Made of top-quality leather and active-breathing fabric reinforced by abrasion-proof kevlar. 100 % watertight.

9 Active Line accessories enable you to show your biking enthusiasm anywhere. The Active Line T-shirt, tie pin or K1 bathing towel (not shown) tell a clear story. And the special motorcycle travel knife offers particular benefits: 9 functions, four of which are just right for minor repairs to your machine (not shown).



9

FREEDOM UNLIMITED: WE HAVE MORE TO OFFER.



Active Line: The new outfit for all kinds of sporting activities. For the best in special motorcycle wear, check out BMW's current range of rider equipment. On the right: the BMW PROTEC suit.



Active Line: A distinctive name for a new range of products. It's a name which stands for particularly rare kinds of fun, joy and sporting ambitions. The kinds with virtually no limits. Active Line is designed specifically for the active, demanding individualist. People who understand substance and style.

After all, first-class quality is never easy, but three initials say it all: BMW. This quality is based on years of experience with our wide range of accessories designed and built to satisfy even the most demanding motorcycle rider and

other sporting enthusiasts. They extend from the BMW System Helmet, one of the best-selling helmets in the world, through High-Tech leather and Gore-Tex motorcycle wear all the way to ergonomically designed sunglasses.

All these products benefit from the practical know-how of BMW's motorcycle specialists cooperating closely with other experts in all areas. Which is precisely why BMW is renowned among motorcycle enthusiasts the world over for its wide range of top-quality products.

If you'd like to know more about BMW's all-inclusive product range, just contact a fellow sporting enthusiast: your BMW motorcycle dealer.

© 1991 BMW Motorrad GmbH + Co.,
Munich, Germany
Not to be reproduced wholly
or in part without written
permission of
BMW Motorrad GmbH + Co.
Printed in Germany 3/91

