

**40 = Frame**

**50 = Fender**

**70 = Seat**

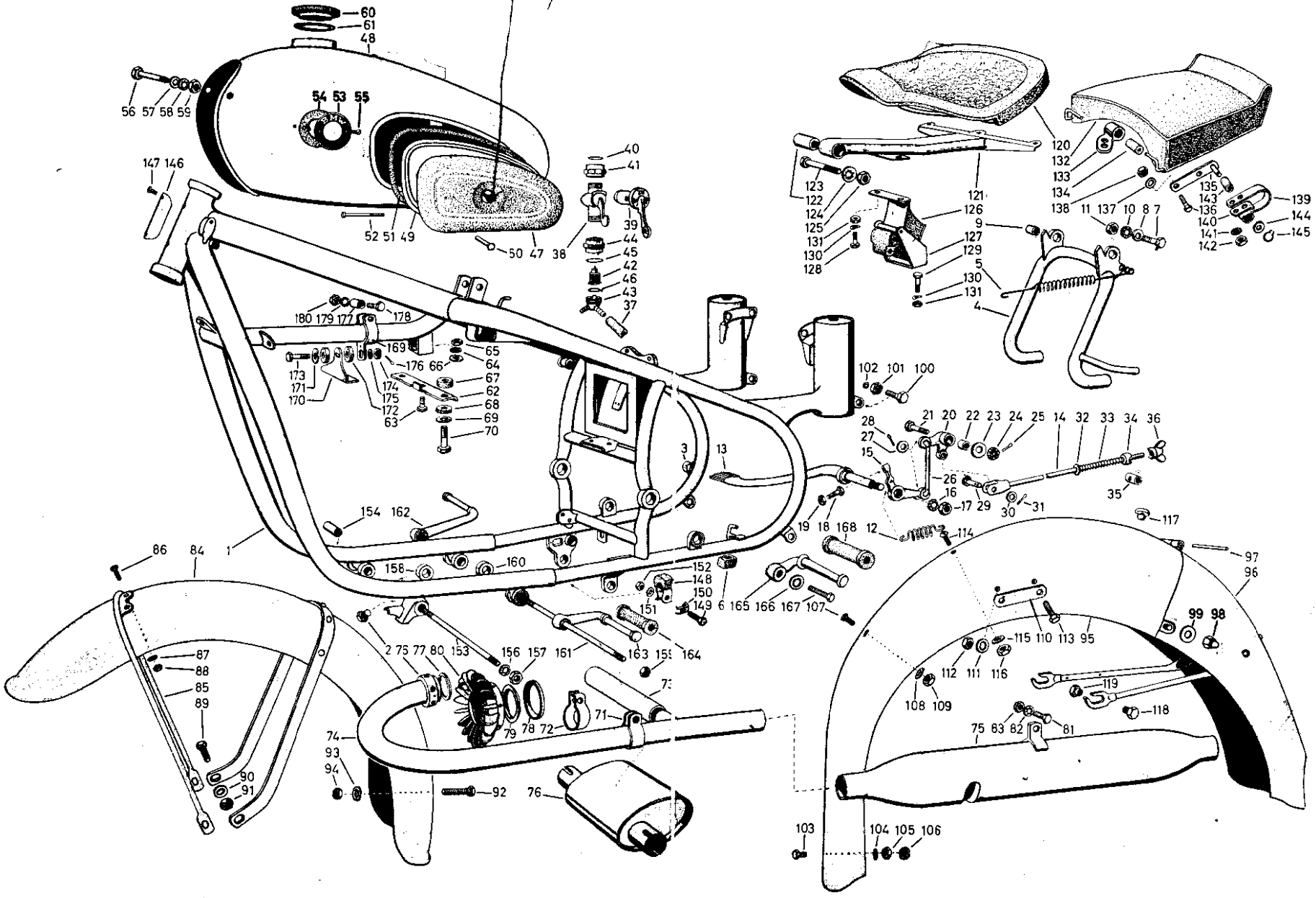
**Table 8**

TOOL BOX LOCK & KEY  
 ALSO - FRONT FORK - KEY & LOCK  
 THEY GO TOGETHER

40 = Frame / 50 = Fender / 70 = Seat  
 R 50 • R 50 S • R 60 • R 69 S

Table 8

90-16-009



Ordering No.	Call-out No.	Description of Part	Qty.				
			R 50 60	R 50/2 60/2	R 50 S	R 69	R 69 S
<b>Frame</b>							
40 00 043	1	Frame .....	1	1	1	1	1
40 00 138	2	Plug for hole provided for side stand installation .....	1	—	—	1	—
40 00 134	3	Ball head for attachment of side car .....	—	1	1	—	1
<b>Center Stand</b>							
40 28 046	4	Center stand .....	1	1	1	1	1
40 28 218	5	Spring .....	2	2	2	2	2
40 28 135	6	Rubber bumper .....	1	1	1	1	1
Center stand attachment on frame							
99 12 620	7	Hex. head bolt M 10×30—8 G pho.black.	2	2	2	2	2
99 31 075	8	Flat washer 10.5 steel pho.black. ....	2	2	2	2	2
40 28 230	9	Spacer washer .....	2	2	2	2	2
99 36 225	10	Star washer J 10.5 pho.black. ....	2	2	2	2	2
99 22 111	11	Hex. nut M 10—6 S pho.black. ....	2	2	2	2	2
<b>Foot Brake Linkage</b>							
40 44 215	12	Spring .....	1	1	1	1	1
40 44 032	13	Foot brake lever with shaft .....	1	1	1	1	1
40 44 224	14	Pull rod for foot brake .....	1	1	1	1	1
40 44 234	15	Connector lever for link and stop light switch on foot brake lever .....	1	1	1	1	1
For connector lever to link and stop light switch on foot brake lever							
99 36 225	16	Star washer J 10.6 pho. ....	1	1	1	1	1
99 20 617	17	Hex. nut M 10×1—6 S pho.black. ....	1	1	1	1	1
Adjuster for stop light switch							
99 13 457	18	Hex.-head screw M 6×15—8 G pho.black.	1	1	1	1	1
99 22 054	19	Hex. nut M 6—6 S pho.black. ....	1	1	1	1	1

Ordering No.	Call-out No.	Description of Part	Qty.					
			R 50 60	R 50/2 60/2	R 50 S	R 69	R 69 S	
		Bell crank on swing arm						
40 44 258	20	Bell crank .....	1	1	1	1	1	
99 12 505	21	Hex.-head bolt M 8×45 S—8 G pho.black. . .	1	1	1	1	1	
40 44 266	22	Bushing .....	1	1	1	1	1	
45 44 160	23	Spacer washer .....	1	1	1	1	1	
99 23 230	24	Castellated nut M 8—6 S pho.black. ....	1	1	1	1	1	
99 45 110	25	Cotter pin 2×20 steel .....	1	1	1	1	1	
		Link on connector lever and bell crank						
40 44 262	26	Link .....	1	1	1	1	1	
99 31 658	27	Washer 8.4 — steel pho.black. ....	2	2	2	2	2	
99 45 091	28	Cotter pin 2×12 — steel .....	2	2	2	2	2	
		For pull rod to bell crank						
99 40 395	29	Fulcrum pin 8 h 11×22×19 pho.black. ....	1	1	1	1	1	
10 66 186	30	Flat washer .....	1	1	1	1	1	
99 95 091	31	Cotter pin .....	1	1	1	1	1	
		For pull rod to brake lever, rear						
99 31 651	32	Flat washer 6.4 steel .....	1	1	1	1	1	
40 44 137	33	Spring .....	1	1	1	1	1	
40 44 133	34	Retainer .....	1	1	1	1	1	
40 44 141	35	Stud .....	1	1	1	1	1	
40 44 115	36	Wing nut .....	1	1	1	1	1	
		<b>Fuel Lines and Fuel Shut-off</b>						
99 88 819	37	Fuel hose (between the tank halves: 170 mm., left to carburetor: 170 mm., right to carburetor: 330 mm.) deliverable only in running meters .....						
40 84 030	38	Fuel shut-off with hose fittings, nut and gasket .....		as req.	as req.		as req.	
40 84 124	39	Lever for petcock .....	1	1	1	1	1	
40 84 110	40	Gasket, top .....	1	1	1	1	1	

40 = Frame  
50 = Fender / 70 = Seat

Fuel Tank

Table 8

Ordering No.	Call-out No.	Description of Part	Qty.				
			R 50 60	R 50/2 60/2	R 50 S	R 69	R 69 S
40 84 120	41	Union, top .....	1	1	1	1	1
40 84 115	42	Screen .....	1	1	1	1	1
40 84 178	43	Hose fitting .....	1	1	1	1	1
40 84 169	44	Union, bottom .....	1	1	1	1	1
40 84 109	45	Gasket (fiber), bottom .....	1	1	1	1	1
40 84 111	46	Gasket (cork), for screen .....	1	1	1	1	1
<b>Fuel Tank</b>							
40 80 192	47	Knee pad, left, for 25-liter tank .....	1	—	—	1	—
40 80 193	47	Knee pad, right, for 25-liter tank .....	1	—	—	1	—
40 80 189	47	Knee pad, left .....	1	1	1	1	1
40 80 187	47	Knee pad, right .....	1	1	1	1	1
40 80 042	48	Fuel tank with tool box .....	1	1	1	1	1
40 80 047	48	Fuel tank, 25 liters, unlacquered .....	1	—	—	1	1
40 80 048	48	Fuel tank, 25 liters, selective finish .....	1	—	—	1	—
40 80 270	49	Cover for tool box .....	1	1	1	1	1
99 47 463	50	Rivet 4×18, for tool box lid .....	3	3	3	3	3
40 80 288	51	Rubber gasket for cover .....	1	1	1	1	1
40 80 178	52	Hinge pin for tool box .....	2	2	2	2	2
40 80 181	53	Insignia .....	2	2	2	2	2
60 40 110	54	Gasket for insignia .....	2	2	2	2	2
99 01 310	55	Filister head countersunk screw M4×8 MS 58, nickel plated .....	4	4	4	4	4
Fuel tank to frame attachment							
99 14 094	56	Hex.-head screw M8×1×100—8 G pho.black.	1	1	1	1	1
99 31 066	57	Flat washer 8.4 steel pho.black. ....	1	1	1	1	1
99 36 205	58	Star washer J 8.4 pho. ....	1	1	1	1	1
99 22 094	59	Hex. nut M 8×1—6 S pho.black. ....	1	1	1	1	1
Fuel tank cap							
40 80 126	60	Fuel tank cap, optional Part No. 40 80 127 ..	1	1	1	1	1
40 80 130	61	Cork gasket for filler cap .....	1	1	1	1	1

Ordering No.	Call-out No.	Description of Part	Qty.					
			R 50 80	R 50/2 60/2	R 50 S	R 69	R 69 S	
		Tank carrier on frame						
40 80 194	62	Tank carrier on frame .....	1	1	1	1	1	
99 13 621	63	Hex.-head screw M 8×15—8 G pho.black.	1	1	1	1	1	
99 36 205	64	Star washer J 8.4 pho. ....	1	1	1	1	1	
99 22 082	65	Hex. nut M 8—6 S pho.black. ....	1	1	1	1	1	
99 31 658	66	Flat washer 8.4 steel, pho.black. ....	1	1	1	1	1	
		For tank carrier to fuel tank						
40 80 248	67	Rubber spacer, top .....	2	2	2	2	2	
40 80 148	68	Rubber spacer, bottom .....	1	1	1	1	1	
40 80 145	69	Flat washer .....	1	1	1	1	1	
99 14 050	70	Hex.-head screw M8×1×30—8G pho.black.	2	2	2	2	2	
		<b>Exhaust System</b>						
40 90 201	71	Clamp for exhaust pipe .....	2	2	2	2	2	
40 90 157	72	Clamp for system with connector muffler ..	—	—	—	2	—	
40 90 248	73	Cross tube .....	1	1	1	1	1	
		Exhaust pipe						
		<b>For R 50 and R 50/2</b>						
		On R 50 from vehicle No. 555 206						
40 90 023	74	Exhaust pipe, right, with adapter ring and coupling nut .....	1	1	—	—	—	
40 90 022	74	Exhaust pipe, left, with adapter ring and coupling nut .....	1	1	—	—	—	
		<b>For R 60 and R 60/2</b>						
40 90 049	74	Exhaust pipe, right, with adapter ring and coupling nut .....	1	1	—	—	—	
40 90 048	74	Exhaust pipe, left, with adapter ring and coupling nut .....	1	1	—	—	—	

40 = Frame  
50 = Fender / 70 = Seat

Exhaust System / Mufflers

Table 8

Ordering No.	Call-out No.	Description of Part	Qty.				
			R 50 60	R 50/2 60/2	R 50 S	R 69	R 69 S
<b>For R 50 S</b>							
40 90 074	74	Exhaust pipe, right, with adapter ring and coupling nut .....	—	—	1	—	—
40 90 073	74	Exhaust pipe, left, with adapter ring and coupling nut .....	—	—	1	—	—
<b>For R 69 - R 69 with connector muffler - R 69 S</b>							
40 90 016	74	Exhaust pipe, right .....	—	—	—	1	1
40 90 014	74	Exhaust pipe, left .....	—	—	—	1	1
<b>Muffler</b>							
<b>For R 50, R 50/2 and R 60</b>							
On R 50 from vehicle No. 555 206							
On R 69 from vehicle No. 652 305							
40 90 095	75	Muffler, right .....	1	1	—	1	—
40 90 097	75	Muffler, left .....	1	1	—	1	—
<b>For R 60/2</b>							
40 90 087	75	Muffler, right .....	—	1	—	—	—
40 90 088	75	Muffler, left .....	—	1	—	—	—
<b>For R 69 with connector muffler</b>							
40 90 092	75	Muffler, right .....	—	—	—	1	—
40 90 091	75	Muffler, left .....	—	—	—	1	—
40 90 094	76	Connector muffler .....	—	—	—	1	—
<b>For R 50 S and R 69 S</b>							
40 90 089	75	Muffler, right .....	—	—	1	—	1
40 90 090	75	Muffler, left .....	—	—	1	—	1

Ordering No.	Call-out No.	Description of Part	Qty.					
			R 50 60	R 50/2 60/2	R 50 S	R 69	R 69 S	
		Exhaust pipe attachment on cylinder heads						
40 90 110	76	Coupling nut .....	2	2	2	—	—	
99 63 470	77	Seal ring C 35×41 copper-asbestos .....	2	2	2	—	—	
40 90 254	78	Thrust ring .....	—	—	—	2	2	
40 90 258	79	Clamp ring .....	—	—	—	2	2	
40 90 250	80	Exhaust pipe coupling nut (wing nut) .....	—	—	—	2	2	
		Muffler to frame attachment						
99 13 628	81	Hex.-head screw M8×18—8G, nickel plated	2	2	2	2	2	
99 36 205	82	Star washer J 8.4 pho.black. ....	2	2	2	2	2	
99 22 082	83	Hex. nut M 8—6 S pho.black. ....	2	2	2	2	2	
		<b>Front Fender</b>						
50 90 022	84	Front fender .....	1	1	1	1	1	
50 90 116	85	Front fender bracket .....	1	1	1	1	1	
		Bracket to fender attachment						
99 13 220	86	Hex.-head screw M5×10—8G, nickel plated	2	2	2	2	2	
99 36 110	87	Star washer J 5.3 pho.black. ....	2	2	2	2	2	
99 22 036	88	Hex. nut M 5—6 S pho.black. ....	2	2	2	2	2	
		Fender to swing arm attachment front						
99 13 625	89	Hex.-head screw M 8×18—8 G, chrome plated .....	2	2	2	2	2	
99 36 205	90	Star washer J 8.4 pho.black. ....	2	2	2	2	2	
99 22 082	91	Hex. nut M 8—6 S pho.black. ....	2	2	2	2	2	
		Fender to swing arm attachment, rear						
99 13 457	92	Hex.-head screw M 6×15—8 G pho.black. ...	2	2	2	2	2	
99 36 135	93	Star washer J 6.4 pho.black. ....	2	2	2	2	2	
99 22 054	94	Hex. nut M 6—6 S pho.black. ....	2	2	2	2	2	



Ordering No.	Call-out No.	Description of Part	Qty.				
			R 50 60	R 50/2 60/2	R 50 S	R 69	R 69 S
<b>Rear Fender</b>							
50 96 032	95	Rear fender, complete .....	1	—	—	1	—
50 96 034	95	Rear fender, complete .....	—	1	1	—	1
50 96 277	96	Rear fender, rear end .....	1	1	1	1	1
50 96 118	97	Hinge pin .....	1	1	1	1	1
Fender clamp connection							
50 96 152	98	Acorn nut .....	2	2	2	2	2
99 31 065	99	Flat washer 8.4 steel cad. ....	2	2	2	2	2
Fender Fastening							
50 96 124	100	Hex.-head screw .....	2	—	—	2	—
50 96 122	101	Shoulder nut .....	2	—	—	2	—
99 31 024	102	Flat washer 4.3 pho.black. ....	2	—	—	2	—
Fender to frame attachment, bottom							
99 11 605	103	Hex.-head screw M 8×12—8 G pho.black. ...	1	1	1	1	1
99 36 205	104	Star washer J 8.4 pho.black. ....	1	1	1	1	1
99 21 606	105	Hex. nut M 8×1—6 S pho.black. ....	1	—	—	1	—
99 23 240	106	Castellated nut M 8×1—6 S pho.black. ....	—	1	1	—	1
Fender to frame attachment, top							
99 13 439	107	Hex.-head screw M 6×12—8 G pho.black.	2	2	2	2	2
99 36 135	108	Star washer J 6.4 pho.black. ....	2	2	2	2	2
99 22 054	109	Hex. nut M 6—6 S pho.black. ....	2	2	2	2	2
Lateral fender attachment							
50 96 128	110	Plate .....	4	4	4	4	4
99 36 135	111	Star washer J 6.4 pho.black. ....	4	4	4	4	4
99 22 059	112	Hex. nut M 6—6 S pho.black. ....	4	4	4	4	4
99 13 444	113	Hex.-head screw M 6×12—8 G nickel plated (for R 50, R 50/2 and R 60/2 [without fender-mounted luggage carrier]) .....	4	4	4	4	4

Ordering No.	Call-out No.	Description of Part	Qty.					
			R 50 60	R 50/2 60/2	R 30 S	R 69	R 69 S	
		Plugs for fender without luggage carrier						
99 16 656	114	Round head screw AM 6×10—5 S, nickel plated .....	4	—	—	4	—	
99 36 135	115	Star washer J 6.4 pho. ....	4	—	—	4	—	
99 22 054	116	Hex. nut M 6—6 S pho.black. ....	4	—	—	4	—	
50 96 154	117	Rubber plug .....	2	4	4	2	4	
		Fender brace attachment						
99 12 455	118	Hex.-head screw M 8×3—8 G pho.black. ...	—	2	2	—	2	
50 96 122	119	Shoulder hex. nut .....	—	2	2	—	2	
		<b>Seat</b>						
70 02 011	120	Seat .....	1	1	1	1	1	
70 02 166	121	Seat carrier .....	1	1	1	1	1	
70 02 141	122	Bushing (silent block) .....	1	1	1	1	1	
99 14 364	123	Hex.-head screw M 10×1×68—8 G pho.black. ....	1	—	—	1	—	
99 36 225	124	Star washer J 10.5 pho.black. ....	1	—	—	1	—	
99 22 121	125	Hex. nut M 10×1—6 S pho.black. ....	1	—	—	1	—	
70 02 155	126	Seat spring (rubber) with brackets .....	1	—	—	1	—	
70 02 190	127	Bottoming piece .....	1	—	—	1	—	
		Seat spring attachment (steel or rubber spring) on frame and seat carrier for R 50 and R 69						
99 13 457	128	Hex.-head screw M 6×15—8 G pho.black. ...	2	—	—	2	—	
99 13 471	129	Hex.-head screw M 6×18—8 G pho.black. ...	2	—	—	2	—	
99 32 071	130	Spring washer B 6 .....	4	—	—	4	—	
99 22 059	131	Hex. nut M 6—6 S pho.black. ....	4	—	—	4	—	
		Sports pillion						
70 02 032	132	Sports pillion, with attachment parts .....	—	—	1	1	1	
70 02 006	132	Sports pillion with frame, bow and flaps ..	—	—	1	1	1	

Ordering No.	Call-out No.	Description of Part	Qty.				
			R 50 60	R 50/2 60/2	R 50 S	R 69	R 69 S
70 02 174	133	Flap, left .....	—	—	—	1	—
70 02 175	133	Flap, right .....	—	—	—	1	—
70 02 170	134	Rubber bushing .....	—	—	2	2	2
70 02 144	135	Attachment with spring stud .....	—	—	2	2	2
		To mount pillion on rear fender, frame and shock absorber holder					
99 13 462	136	Hex.-head screw M 6×15—8 G pho.black. ...	—	—	4	4	4
99 36 135	137	Star washer J 6.4 pho. ....	—	—	4	4	4
99 22 054	138	Hex. nut M 6—6 S pho. ....	—	—	4	4	4
70 02 152	139	Leaf spring .....	1	—	2	2	2
		For leaf spring, top, on sports pillion					
70 02 180	140	Plate .....	2	—	2	2	2
99 36 135	141	Star washer J 6.4 pho. ....	4	—	4	4	4
99 22 111	142	Hex. nut M 6—6 S pho.black. ....	4	—	4	4	4
		For leaf spring, bottom, to spring pin attachment					
70 02 148	143	Rubber bushing .....	2	—	2	2	2
99 31 658	144	Washer 8.4 pho.black. ....	2	—	2	2	2
99 34 035	145	Circlip 8×0.8 .....	2	—	2	2	2
		<b>Name Plate</b>					
40 34 136	146	Name plate, neutral .....	1	1	1	1	1
40 34 246	146	Name plate for R 50 .....	1	—	—	—	—
40 34 249	146	Name plate for R 60 .....	1	—	—	—	—
40 34 247	146	Name plate for R 69 .....	—	—	—	1	—
40 34 200	146	Name plate for R 50/2 .....	—	1	—	—	—
40 34 206	146	Name plate for R 60/2 .....	—	1	—	—	—
40 34 202	146	Name plate for R 50 S .....	—	—	1	—	—
40 34 204	146	Name plate for R 69 S .....	—	—	—	—	1
99 16 604	147	Round head screw M 5×6—5 S cad. ....	2	2	2	2	2

40 = Frame

50 = Fender / 70 = Seat

## Engine and Footrest Mounts

Table 8

Ordering No.	Call-out No.	Description of Part	Qty.				
			R 50 60	R 50/2 60/2	R 50 S	R 69	R 69 S
		<b>Fittings</b>					
40 34 256	148	Rubber bumper for kickstarter with screws . . .	1	—	—	1	—
40 34 257	148	Rubber bumper for kickstarter . . . . .	—	1	1	—	1
99 12 193	149	Hex.-head screw M 5×30—8 G pho.black. . .	1	1	1	1	1
40 34 156	150	Plate . . . . .	2	2	2	2	2
99 36 110	151	Star washer . . . . .	1	1	1	1	1
99 22 036	152	Hex. nut M 5—6 S pho.black. . . . .	1	1	1	1	1
		<b>Engine and Footrest Mounts</b>					
		<b>Front engine mounting</b>					
40 34 216	153	Through bolt . . . . .	1	1	1	1	1
40 34 224	154	Bushing . . . . .	1	1	1	1	1
99 36 245	156	Star washer J 12.5 pho. . . . .	2	2	2	2	2
99 22 145	157	Hex. nut M 12×1.5—6 S pho.black. . . . .	2	2	2	2	2
40 34 227	158	Spacer bushing . . . . .	1	1	1	1	1
		<b>Rear engine and footrest mounting</b>					
99 22 145	159	Hex. nut M 12×1.5—6 S pho.black. . . . .	2	2	2	2	2
40 34 227	160	Spacer bushing . . . . .	1	1	1	1	1
40 34 210	161	Through bolt . . . . .	1	1	1	1	1
40 34 260	162	Foot rest, right . . . . .	1	1	1	1	1
90 34 125	163	Foot rest, left . . . . .	1	1	1	1	1
90 34 128	164	Foot rest rubber pad . . . . .	2	2	2	2	2
		<b>Additional rear foot rests for R 69</b>					
40 34 150	165	Foot rests (left and right) . . . . .	—	—	—	2	—
99 36 245	166	Star washer J 12.5 pho. . . . .	—	—	—	2	—
99 13 890	167	Hex.-head screw M 12×25—8 G pho.black. . . . .	—	—	—	2	—
90 34 128	168	Foot rest rubber pad . . . . .	—	—	—	1	—

40 = Frame  
50 = Fender / 70 = Seat

Engine and Footrest Mounts

Table 8

Ordering No.	Call-out No.	Description of Part	Qty.					
			R 50 60	R 50/2 60/2	R 50 S	R 69	R 69 S	
		Engine support (Clamp to bracket fastening)						
40 34 278	169	Clamp with tab .....	1	1	1	1	1	
40 34 282	170	Angle piece .....	1	1	1	1	1	
40 80 145	171	Flat washer .....	1	1	1	1	1	
40 80 148	172	Rubber washer .....	2	2	2	2	2	
98 12 467	173	Hex.-head screw M 8× 32 S—8 G pho.black.	1	1	1	1	1	
99 23 412	174	Castellated nut M 8—6 S pho.black. ....	1	1	1	1	1	
99 31 066	175	Flat washer 8.4 pho.black. ....	1	1	1	1	1	
99 45 105	176	Cotter pin 2×18 .....	1	1	1	1	1	
		Clamp to frame attachment						
40 34 274	177	Spacer bushing .....	1	1	1	1	1	
99 12 466	178	Hex.-head screw M 8×32 G pho.black. ....	1	1	1	1	1	
99 36 205	179	Star washer J 8.4 pho. ....	1	1	1	1	1	
99 22 082	180	Hex. nut M 8—6 S pho.black. ....	1	1	1	1	1	