

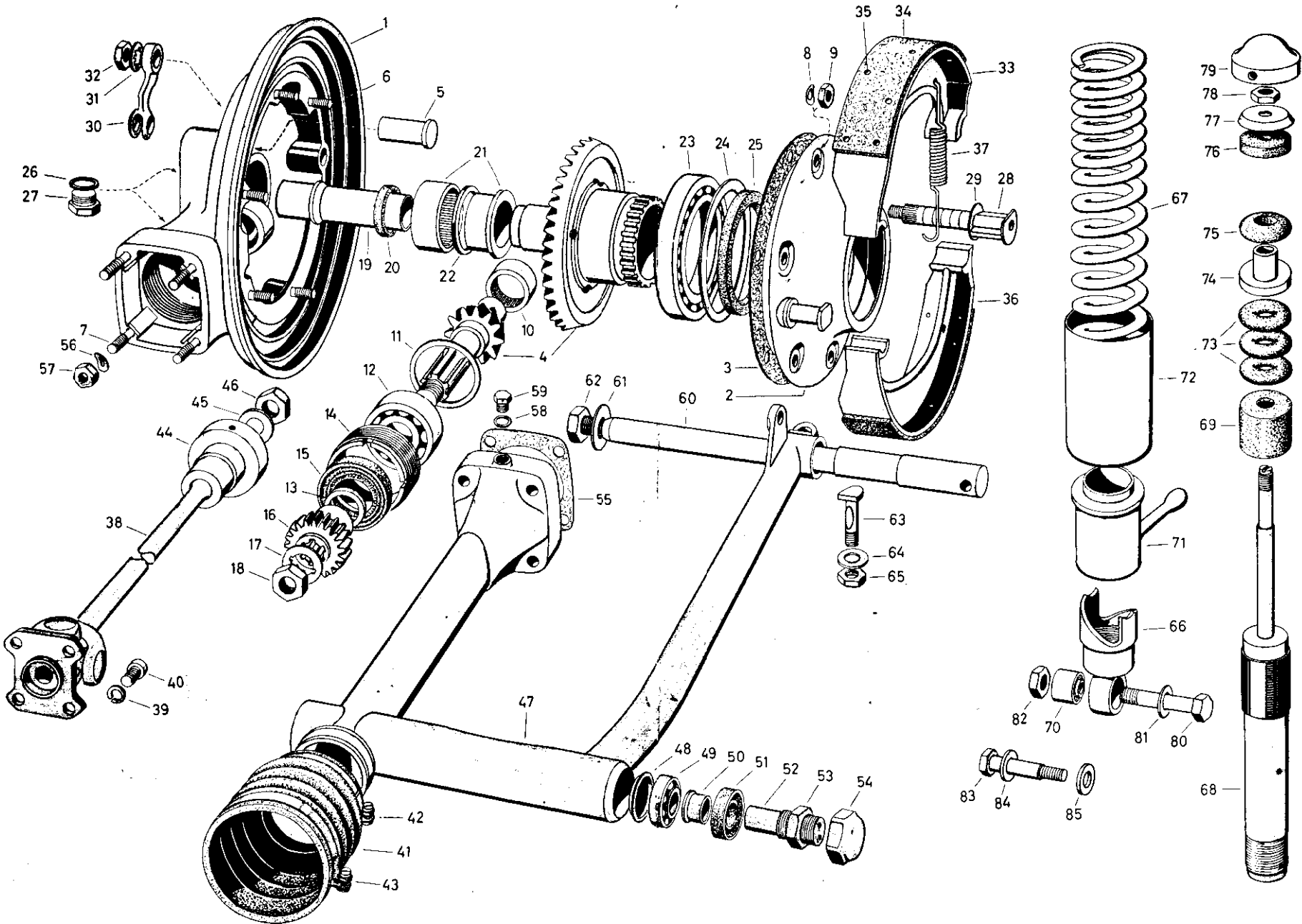
30 = {
Rear Wheel Drive
Rear Wheel Brake

Table 7

30 = Rear Wheel Drive and Rear Wheel Brake

R 50 • R 50 S • R 60 • R 69 S

Table 7



Ordering No.	Call-out No.	Description of Part	Qty.				
			R 50 60	R 50/2 60/2	R 50 S	R 69	R 69 S
Rear Wheel Drive with Swing Arm							
For R 50, R 69							
R 50 up to vehicle 555 005							
R 69 up to vehicle 652 304							
30 04 030	—	Rear wheel drive with 11—35 tooth combination pinion and ring gear	1	—	—	1	—
30 04 304	1	Bevel gear housing with studs	1	—	—	1	—
30 04 309	2	Cover with brake anchor bolt for bevel gear housing	1	—	—	1	—
30 04 319	3	gasket between bevel drive housing and cover	1	—	—	1	—
30 10 170	4	Pinion and ring gear, 11—35 tooth combination	1	—	—	1	—
For R 60, R 60/2							
R 60/2 up to vehicle 622 353							
30 04 035	—	Rear wheel drive with 11—32 tooth combination pinion and ring gear	1	1	—	—	—
30 10 183	4	Pinion and ring gear, 11—32 tooth combination	1	1	—	—	—
For R 50, R 50/2, R 60/2, R 69, R 69, S							
R 50 from vehicle 555 006							
R 69 from vehicle 652 305							
R 60/2 from vehicle 622 354							
30 04 031	—	Rear wheel drive with 8—25 tooth combination pinion and ring gear	1	1	—	1	1
30 10 172	4	Pinion and ring gear, 8—25 tooth combination	1	1	—	1	1

Ordering No.	Call-out No.	Description of Part	Qty.					
			R 50 60	R 50/2 60/2	R 50 S	R 69	R 69 S	
		For R 50 S						
30 04 019	—	Rear wheel drive with 7—25 tooth combination pinion and ring gear	—	—	1	—	—	
30 10 173	4	Pinion and ring gear, 7—25 tooth combination	—	—	1	—	—	
		For all models indicated hereunder						
		R 50, R 50/2, R 50 S						
		R 60, R 60/2, R 69, R 69 S						
		R 50 from vehicle 555 006						
		R 69 from vehicle 652 305						
30 04 305	1	Bevel drive housing with studs	1	1	1	1	1	
30 04 310	2	Cover with brake anchor bolt for bevel gear housing	1	1	1	1	1	
30 04 320	3	Gasket between bevel gear housing and cover	1	1	1	1	1	
30 04 317	5	Threaded bushing for bevel gear housing	1	1	1	1	1	
99 03 503	6	Stud M 8×1×15 Sn—5 S pho.black. (E) to mount cover	6	6	6	6	6	
99 03 530	7	Stud M 8×1×28 Sn — pho.black. (E) to mount swing arm	4	4	4	4	4	
99 32 091	8	Spring washer B 8 for cover on bevel gear housing	6	6	6	6	6	
99 21 606	9	Hex. nut M 8×1—6 S pho.black. for cover	6	6	6	6	6	
		Pinion Bearings in Bevel Gear Housing						
		R 50 up to vehicle 555 005						
		R 69 up to vehicle 652 304						
30 04 315	—	Outer race for needle bearing	1	—	—	1	—	
30 38 240	—	Inner race for needle bearing	1	—	—	1	—	
30 38 244	—	Bearing needle	28	—	—	28	—	

Ordering No.	Call-out No.	Description of Part	Qty.					
			R 50 60	R 50/2 60/2	R 50 S	R 69	R 69 S	
		R 50 from vehicle 555 006						
		R 60 from vehicle 652 305						
30 38 245	10	JNA needle bearing	1	1	1	1	1	
30 38 198	11	Shim (thickness as required)	1	1	1	1	1	
99 82 467	12	Taper roller bearing 3304×	1	1	1	1	1	
30 38 248	13	Sparer	1	1	1	1	1	
30 38 252	14	Threaded ring	1	1	1	1	1	
30 38 256	15	Seal ring	1	1	1	1	1	
30 38 260	16	Coupler gear	1	1	1	1	1	
30 38 264	17	Locking plate for coupler gear on pinion ..	1	1	1	1	1	
99 21 630	18	Hex. nut M 14×1.5—6 S pho.black	1	1	1	1	1	
Ring Gear Bearings in Bevel Gear Housing								
30 04 334	19	Spacer bushing	1	1	1	1	1	
30 04 336	20	Seal ring	1	1	1	1	1	
30 04 338	21	JNA needle bearing	1	1	1	1	1	
30 04 340	22	Thrust washer (thickness as required)	1	1	1	1	1	
99 81 760	23	Ball bearing 16013	1	1	1	1	1	
30 04 344	24	Shim (thickness as required)	1	1	1	1	1	
30 04 342	25	Seal ring	1	1	1	1	1	
Oil Inlet and Oil Drain in Bevel Gear Housing								
99 63 242	26	Seal ring (14×20 steel-asbestos)	2	2	2	2	2	
00 07 104	27	Plug (for R 69 and R 69 S only one for oil inlet)	2	2	2	2	2	
00 07 161	27	Drain plug with magnet for oil drain	—	—	1	1	1	
00 07 106	27	Plug, 0.1 mm. oversize	as req.	as req.	—	—	—	
00 07 160	27	Drain plug with magnet for oil drain, 0.1 mm. oversize	—	—	as req.	as req.	as req.	

30 = Rear Wheel Drive and Rear Wheel Brake Oil Inlet and Oil Drain / Brake / Drive Shaft Table 7

Ordering No.	Call-out No.	Description of Part	Qty.					
			R 50 60	R 50/2 60/2	R 50 S	R 69	R 69 S	
		Plug with gasket for damaged thread, tapped to M 16×1.5						
99 63 259	—	Gasket (16×20 steel-asbestos)	—	as req.	as req.	as req.	as req.	as req.
00 07 108	—	Plug with thread M 16×1.5	—	as req.	as req.	as req.	as req.	as req.
00 07 162	—	Plug with magnet for oil drain with thread M 16×1.5	—	—	as req.	as req.	as req.	as req.
Rear Wheel Brake								
30 60 216	28	Brake cam with washer	1	1	1	1	1	1
30 60 107	29	Washer for brake cam	1	1	1	1	1	1
30 60 206	30	Brake lever for solo motorcycle	1	1	1	1	1	1
99 36 225	31	Star washer J 10.5 pho. for brake lever	1	1	1	1	1	1
99 21 617	32	Hex. nut M 10×1—6 S pho.black. for brake lever	1	1	1	1	1	1
30 60 244	33	Upper brake shoes, rear, with lining	1	1	1	1	1	1
20 60 235	34	Brake lining for upper and lower brake shoes	2	2	2	2	2	2
20 00 196	35	Copper rivet for upper and lower brake shoes	18	18	18	18	18	18
30 60 248	36	Lower brake shoe, rear, with brake lining	1	1	1	1	1	1
20 60 237	37	Brake shoe return spring	2	2	2	2	2	2
Drive Shaft with Universal Joint								
30 38 032	38	Drive shaft with universal joint	1	1	1	1	1	1
		Drive shaft attachment on transmission output flange						
30 38 220	39	Lock washer	4	4	4	4	4	4
99 19 725	40	Allenhead screw M 8×1×15—8 G pho.black.	4	4	4	4	4	4
		Covering of universal joint between transmission and rear swing arm						
30 38 224	41	Rubber sleeve to cover universal joint	1	1	1	1	1	1
99 48 830	42	Clamp for rubber sleeve, rear	1	—	—	1	—	—
99 48 839	43	Clamp for rubber sleeve, front	1	—	—	1	—	—

Ordering No.	Call-out No.	Description of Part	Qty.					
			R 50 60	R 50/2 60/2	R 50 S	R 69	R 69 S	
		Internally splined cup on drive shaft, rear						
30 38 237	44	Internally splined cup	1	1	1	1	1	
99 31 681	45	Washer 15 steel pho.black. for internally splined cup	1	1	1	1	1	
99 21 630	46	Hex. nut M 14×1.5—6 S pho.black. for internally splined cup	1	1	1	1	1	
Rear Swing Arm with Bearings								
30 54 260	47	Rear swing arm	1	1	1	1	1	
30 54 168	48	Cover plate	1	1	1	1	1	
99 85 005	49	Taper roller bearing 30 203	2	2	2	2	2	
20 00 324	50	Bushing	2	2	2	2	2	
20 00 330	51	Seal ring	2	2	2	2	2	
30 54 170	52	Bearing pivot	2	2	2	2	2	
Swing arm attachment on frame								
30 54 174	53	Hex. nut	2	2	2	2	2	
30 54 172	54	Cap nut	2	2	2	2	2	
Swing arm attachment on bevel gear housing								
30 54 266	55	Gasket	1	1	1	1	1	
99 32 080	56	Spring washer B 8	4	4	4	4	4	
99 22 094	57	Hex. nut M 8×1—6 S pho.black	4	4	4	4	4	
Oil inlet and oil drain in swing arm flange								
99 63 086	58	Gasket (10×14 steel asbestos)	2	2	2	2	2	
99 19 215	59	Plug AM 10×1—6 S pho.black.	2	2	2	2	2	
Rear Wheel Axle								
30 04 368	60	Axle	1	1	1	1	1	
Axle attachment on bevel gear housing								
30 04 378	61	Washer	1	1	1	1	1	
99 22 155	62	Hex. nut M 14×1.5—6 S, dead nickel plated	1	1	1	1	1	

Ordering No.	Call-out No.	Description of Part	Qty.					
			R 50 60	R 50/2 60/2	R 50 S	R 69	R 69 S	
		Axle clamping on swing arm, left						
30 54 176	63	Clamp screw on swing arm left	1	1	1	1	1	
99 31 076	64	Washer 10.5 steel pho.black. for clamp screw	1	—	—	1	—	
99 22 121	65	Hex. nut M 10×1—6 S pho.black.	1	1	1	1	1	
Suspension Units for Rear Swing Arm								
30 54 034	—	Suspension unit, left complete	1	1	1	1	1	
30 54 035	—	Suspension unit, right, complete	1	1	1	1	1	
30 54 282	66	Attachment bottom, left	1	1	1	1	1	
30 54 283	—	Attachment, bottom, right	1	1	1	1	1	
30 54 284	67	Coil spring 7 mm. dia.	2	2	2	2	2	
30 54 290	68	Shock absorber with hex. nut	2	2	2	2	2	
20 54 236	69	Shock absorber seal for R 50, R 60 and R 69	2	—	—	2	—	
30 54 296	70	Silent block	2	2	2	2	2	
30 54 194	71	Adjuster bushing with cam rider	2	2	2	2	2	
30 54 240	72	Cover, bottom	2	2	2	2	2	
20 54 528	73	Bottoming ring	6	6	6	6	6	
30 54 200	74	Top plate	2	2	2	2	2	
30 54 204	75	Rubber bumper	2	2	2	2	2	
30 54 208	76	Rubber bumper	2	2	2	2	2	
30 54 210	77	Cup	2	2	2	2	2	
30 54 290	78	Hex. nut M 10×1	2	2	2	2	2	
30 54 212	79	Cover	2	2	2	2	2	
Attachment of suspension unit, left, on swing arm								
99 14 625	80	Hex. head bolt M 12×1.5×45—8 G cad.	1	1	1	1	1	
99 31 083	81	Flat washer 13 — steel cad.	1	1	1	1	1	
99 21 626	82	Hex. nut M 12×1.5—6 S cad.	1	1	1	1	1	

Ordering No.	Call-out No.	Description of Part	Qty.					
			R 50 60	R 50/2 60/2	R 50 S	R 69	R 69 S	
		Attachment of suspension unit, right, on bevel gear housing						
30 54 270	83	Mounting screw	1	1	1	1	1	
99 31 083	84	Flat washer 13 — steel cad.	1	1	1	1	1	
30 54 274	85	Spacer washer	1	1	1	1	1	