

20 = Front Fork

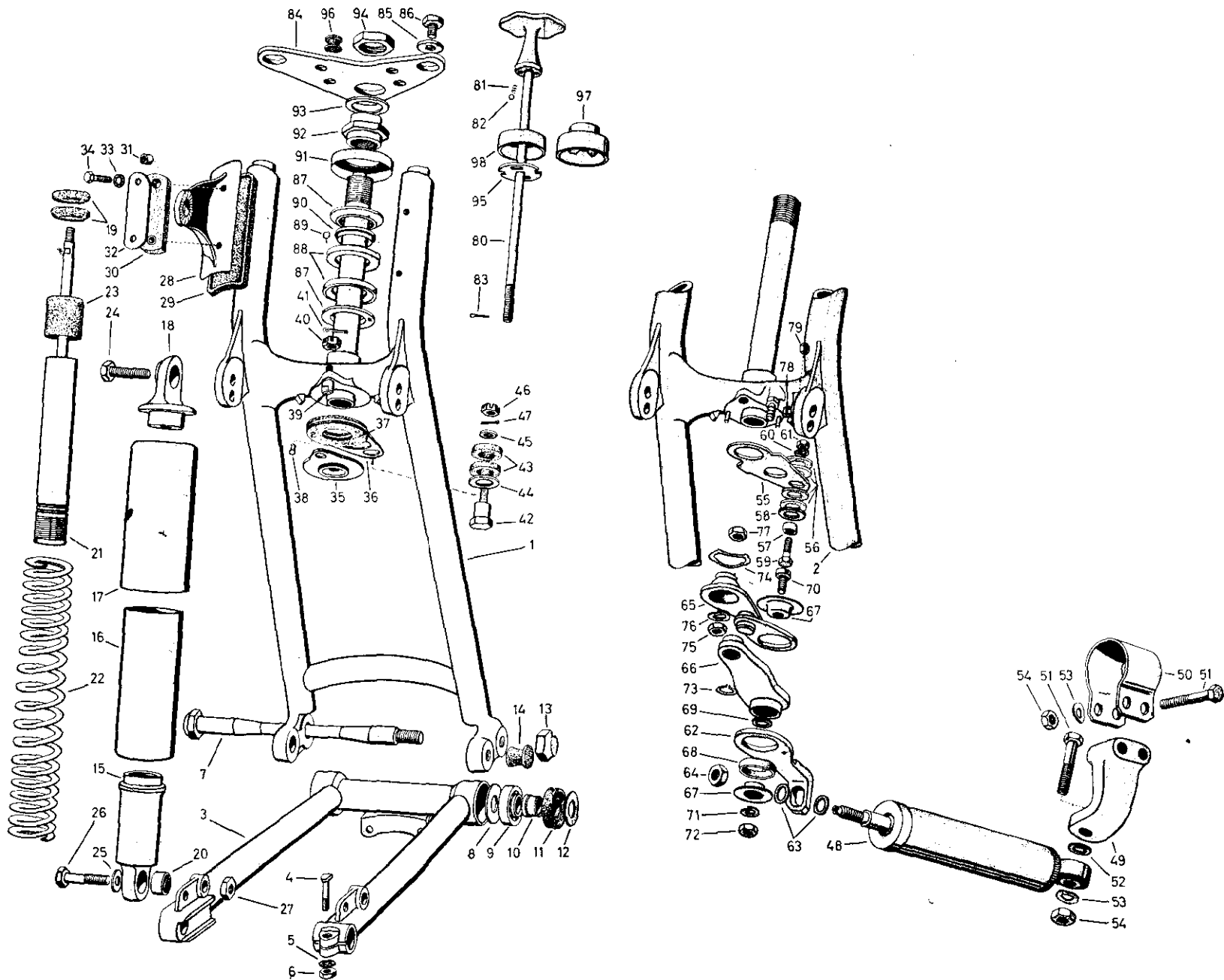
Table 5

Front Fork

20 = Front Fork

R 50 · R 50 S · R 60 · R 69 S

Table 5



Ordering No.	Call-out No.	Description of Part	Qty.					
			R 50 60	R 50/2 60/2	R 50 S	R 69	R 69 S	
		Front Fork						
20 00 020	—	Front fork, complete	1	1	—	1	—	
20 00 022	—	Front fork, complete, with hydraulic steering damper	—	—	1	—	1	
20 00 362	1	Steering fork	1	1	—	1	—	
20 00 364	2	Steering fork for steering damper	—	—	1	—	1	
20 00 368	3	Swing arm	1	1	1	1	1	
		Installation of front wheel axle, left						
20 00 293	4	Clamping bolt	1	1	1	1	1	
99 36 205	5	Star washer J 8.4 pho.	1	1	1	1	1	
99 22 094	6	Hex. nut M 8×1—6 S pho.black.	1	1	1	1	1	
		Swing arm bearing installation						
20 00 320	7	Shaft	1	1	1	1	1	
20 00 322	8	Flat washer	2	2	2	2	2	
99 85 005	9	Ball bearing 30203	2	2	2	2	2	
20 00 324	10	Bushing	2	2	2	2	2	
20 00 330	11	Seal	2	2	2	2	2	
20 00 326	12	Spacer	2	2	2	2	2	
20 00 328	13	Acorn nut	1	1	1	1	1	
20 00 334	14	Rubber plug, left and right	2	2	2	2	2	
		Suspension units (left and right)						
20 54 016	—	Telescopic spring and shock absorber assembly, complete	2	2	—	2	—	
20 54 025	—	Telescopic spring and shock absorber assembly, complete	—	—	2	—	2	
20 54 200	15	Attachment, bottom	2	2	2	2	2	
20 02 132	16	Cover, bottom	2	2	2	2	2	
20 02 126	17	Cover, top	2	2	2	2	2	
20 54 206	18	Attachment, top	2	2	2	2	2	

Ordering No.	Call-out No.	Description of Part	Qty.				
			R 50 60	R 50/2 60/2	R 50 S	R 69	R 69 S
20 54 528	19	Bottoming ring	4	4	6	4	6
20 54 234	20	Silent block	4	4	4	4	4
20 54 232	21	Shock absorber, complete	2	2	2	2	2
20 54 008	22	Coil spring	2	2	2	2	2
20 54 236	23	Shock absorber seal	2	2	—	2	—
		Upper and lower mounting of suspension units					
99 14 345	24	Hex.-head bolt M 10×1×42—10 K nickel-plated	2	2	2	2	2
20 00 345	25	Flat washer	4	4	4	4	4
99 14 347	26	Hex.-head bolt M 10×1×48—10 K	2	2	2	2	2
99 22 121	27	Hex. nut M 10×1—6 S pho.black.	4	4	4	4	4
		Headlight bracket, left and right					
20 00 305	28	Headlight bracket, left	1	1	1	1	1
20 00 313	28	Headlight bracket, right	1	1	1	1	1
20 00 336	29	Rubber pad	2	2	2	2	2
20 00 338	30	Spacer plate	2	2	2	2	2
20 00 340	31	Spacer ring	4	4	4	4	4
20 00 347	32	Mounting plate, top	2	2	2	2	2
99 36 135	33	Star washer J 6.4 pho.	4	4	4	4	4
99 12 240	34	Hex.-head screw M 6×20—8 G	4	4	4	4	4
		Frictional steering damper, lower assembly					
20 00 231	35	Bottom plate	1	1	—	1	—
20 00 221	36	Anchor plate	1	1	—	1	—
20 00 235	37	Friction disc for anchor plate	2	2	—	2	—
99 49 213	38	Rivet C 3×10 steel copper plated	3	3	—	3	—
20 00 295	39	Stud	1	1	—	1	—
99 23 412	40	Castellated nut M 8—6 S pho.black.	1	1	—	1	—
99 45 105	41	Cotter pin 2×18 steel	1	1	—	1	—

Ordering No.	Call-out No.	Description of Part	Qty.					
			R 50 60	R 50/2 60/2	R 50 S	R 69	R 69 S	
		Anchor plate attachment on frame						
20 00 255	42	Retaining screw	1	1	—	1	—	
20 00 257	43	Rubber ring	2	2	—	2	—	
99 31 850	44	Flat washer 16 pho.black.	1	1	—	1	—	
99 31 658	45	Flat washer 8.4 pho.black.	1	1	—	1	—	
99 23 412	46	Castellated nut M 8—6 S pho.black.	1	1	—	1	—	
99 45 105	47	Cotter pin 2×18 steel	1	1	—	1	—	
		Hydraulic steering damper with mounting on frame						
20 54 070	48	Hydraulic steering damper	—	—	1	—	1	
20 54 220	49	Mounting bracket	—	—	1	—	1	
20 54 221	50	Clamp on frame tube	—	—	1	—	1	
99 12 480	51	Hex.-head screw M 8×38—8 G pho.black. ...	—	—	3	—	3	
99 31 066	52	Flat washer 8.4 pho.black.	—	—	1	—	1	
99 32 091	53	Spring washer B 8	—	—	3	—	3	
99 22 082	54	Hex. nut M 8—6 S pho.black.	—	—	3	—	3	
		Anchor plate with mounting on frame						
20 54 222	55	Anchor plate	—	—	1	—	1	
80 50 136	56	Rubber washer	—	—	4	—	4	
20 54 223	57	Spacer	—	—	1	—	1	
45 70 122	58	Flat washer	—	—	1	—	1	
99 12 440	59	Hex.-head screw M 8×25—8 G pho.black.	—	—	1	—	1	
99 33 094	60	Lock washer	—	—	1	—	1	
99 22 082	61	Hex. nut M 8—6 S pho.black.	—	—	1	—	1	
		Link on steering damper						
20 54 225	62	Link	—	—	1	—	1	
99 31 658	63	Flat washer 8.4 pho.black.	—	—	2	—	2	
99 22 082	64	Hex. nut M 8—6 S pho.black.	—	—	1	—	1	

Ordering No.	Call-out No.	Description of Part	Qty.					
			R 50 60	R 50/2 60/2	R 50 S	R 69	R 69 S	
		Coupling to link and damper setting lever						
20 54 227	65	Coupling	—	—	1	—	1	
20 54 226	66	Setting lever	—	—	1	—	1	
20 54 217	67	Detent cup	—	—	2	—	2	
20 54 218	68	Guide ring	—	—	1	—	1	
20 54 219	69	Spacer	—	—	1	—	1	
99 19 460	70	Screw AM 6×10—5	—	—	1	—	1	
99 33 078	71	Lock ring B 6	—	—	1	—	1	
99 21 055	72	Hex. nut BM 6—5 S pho.black.	—	—	1	—	1	
99 34 035	73	Circlip 8×0.8 for setting lever on stud of lower fork guide	—	—	1	—	1	
		Attachment of setting lever on lower fork guide and damper rod						
05 34 332	74	Spring washer	—	—	1	—	1	
20 54 224	75	Hex. nut	—	—	1	—	1	
99 33 094	76	Lock washer	—	—	1	—	1	
99 22 094	77	Hex. nut M 8×1—6 S pho.black.	—	—	2	—	2	
		Adjusting screw for lower fork guide						
40 38 180	78	Hex.-head screw	—	—	1	—	1	
99 21 055	79	Hex. nut BM 6—5 S pho.black.	—	—	1	—	1	
		Damper rod						
20 00 046	80	Damper rod, complete, with spring and ball	1	1	—	1	—	
20 00 047	80	Damper rod, complete, with spring and ball	—	—	1	—	1	
20 00 118	81	Spring	2	2	2	2	2	
99 86 255	82	Ball 5.5 mm. dia. III	2	2	2	2	2	
99 45 095	83	Cotter pin 2×15 steel for bottom end of damper rod	1	1	—	1	—	

Ordering No.	Call-out No.	Description of Part	Qty.					
			R 50 60	R 50/2 60/2	R 50 S	R 69	R 69 S	
		Upper fork guide and steering head ballraces:						
20 00 126	84	Fork guide plate, top	1	1	1	1	1	1
20 00 345	85	Flat washer	2	2	2	2	2	2
20 00 343	86	Fork crown screw	2	2	2	2	2	2
20 00 188	87	Ballrace, with inside shoulder	2	2	2	2	2	2
20 00 190	88	Ballrace, with outside shoulder	2	2	2	2	2	2
99 86 255	89	Ball 5.5 mm. dia. III	46	46	46	46	46	46
20 00 193	90	Cage	1	1	1	1	1	1
20 00 184	91	Ballrace cover	1	1	1	1	1	1
20 00 182	92	Lower nut	1	1	1	1	1	1
20 00 297	93	Spacer	1	1	1	1	1	1
20 00 101	94	Upper nut	1	1	1	1	1	1
20 00 245	95	Lock plate	1	1	1	1	1	1
20 00 299	96	Rubber plug	2	2	2	2	2	2
20 00 119	97	Head cap, complete, with intermediate washer	—	—	1	—	—	1
20 00 114	98	Head cap with lock spring	1	1	1	1	1	1